

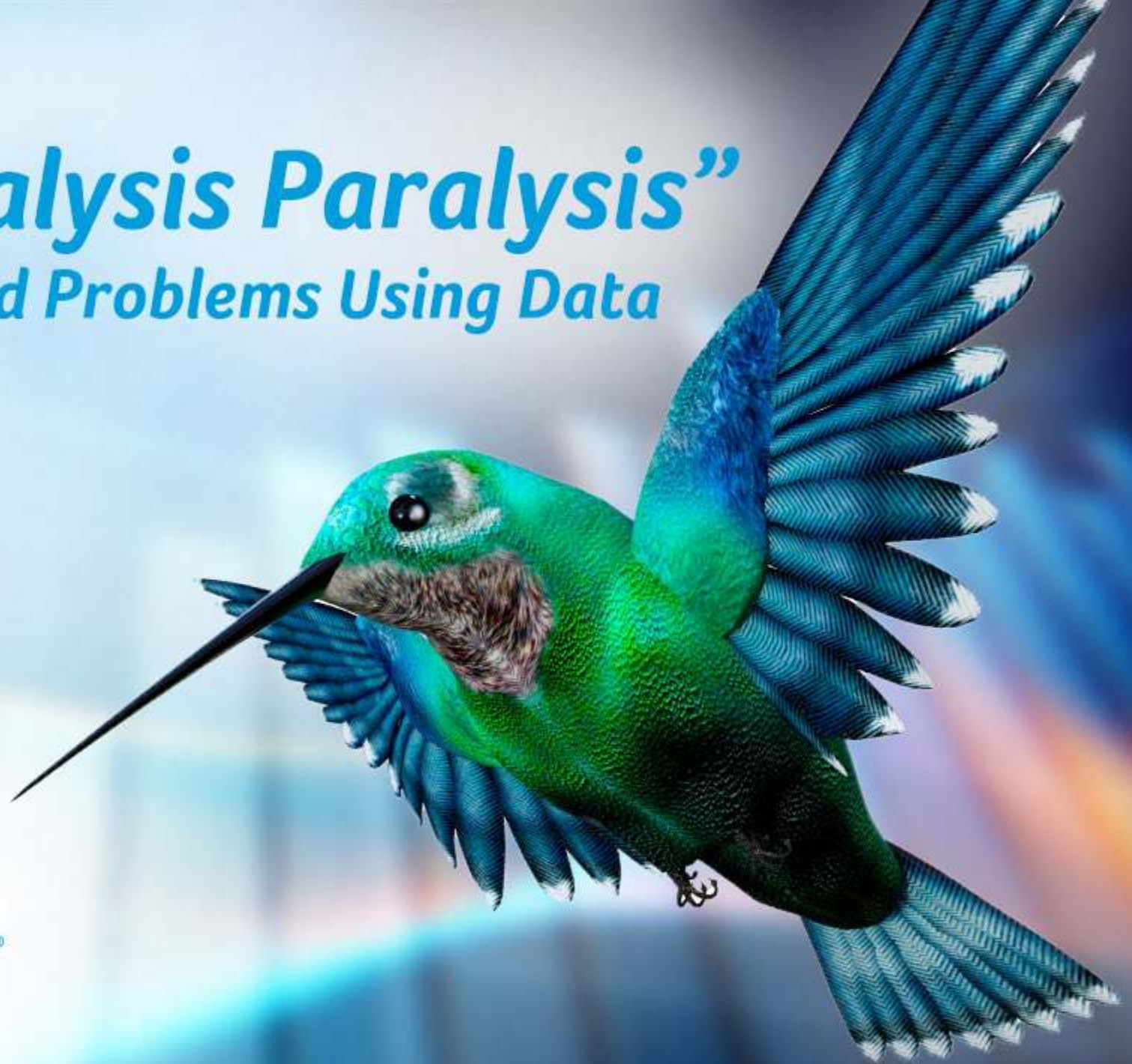
Avoiding “Analysis Paralysis”

How 3 Districts Solved Problems Using Data

Dr. Tina McMechen

Dr. Valerie Batley-Brown

Ebbe Divins



SCANTRON.
SMART STARTS HERE

Take a Short Poll



Data vs. Decision vs. Action



OBJECTIVE DATA

I can play six chords on the guitar.



SUBJECTIVE DATA

I have a good voice.



DECISION

I'm going to become a rock star.



ACTION

Writes a song, performs the song, signs with agent, signs with label, song hits the charts, buys tight pants and a private jet, etc.



D.R.I.P

How is data used?

- Diagnose problems
- Weigh alternatives
- Justify decisions
- Comply with external requests
- Inform daily practice
- Manage culture



Elements to consider

- Source
- Timeframe
- Intended audience

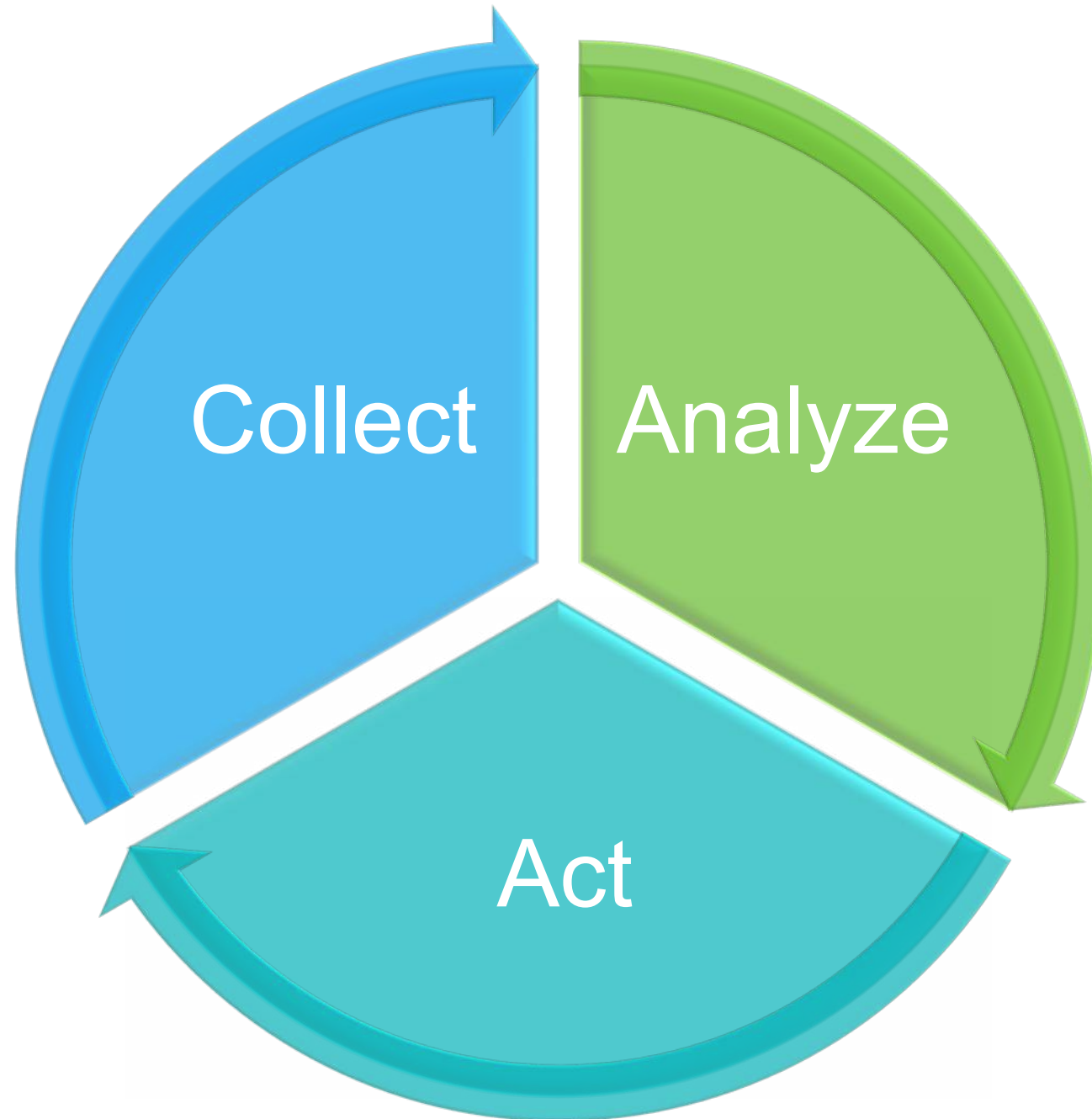


6 necessary skills for effective data use

1. Locating data
2. Comprehending data
3. Interpreting data
4. Posing questions
5. Decision-making
6. Managing change



The dream



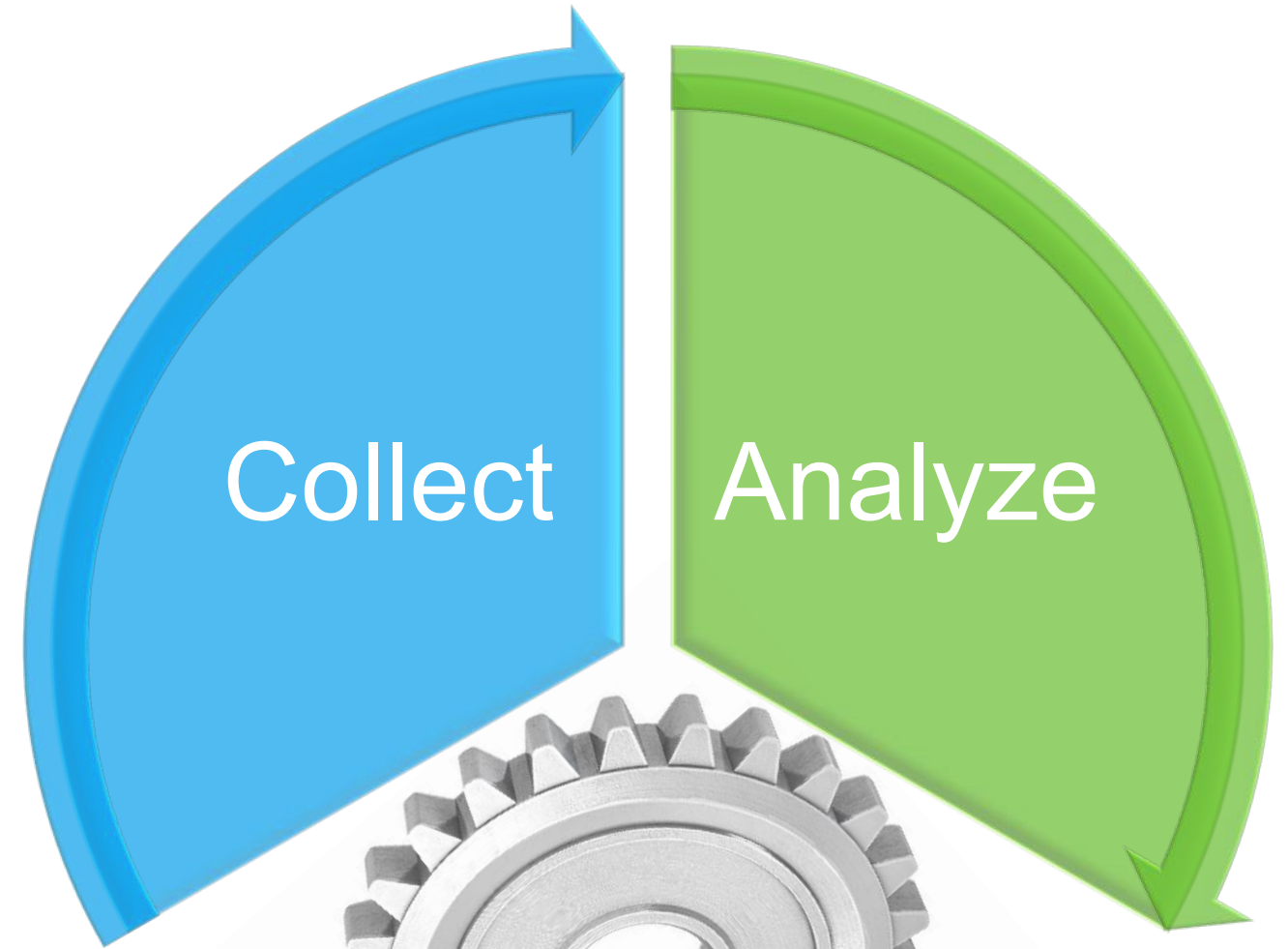
The reality

Information overload

Incomplete picture

Feels like trial and error

Lack of time

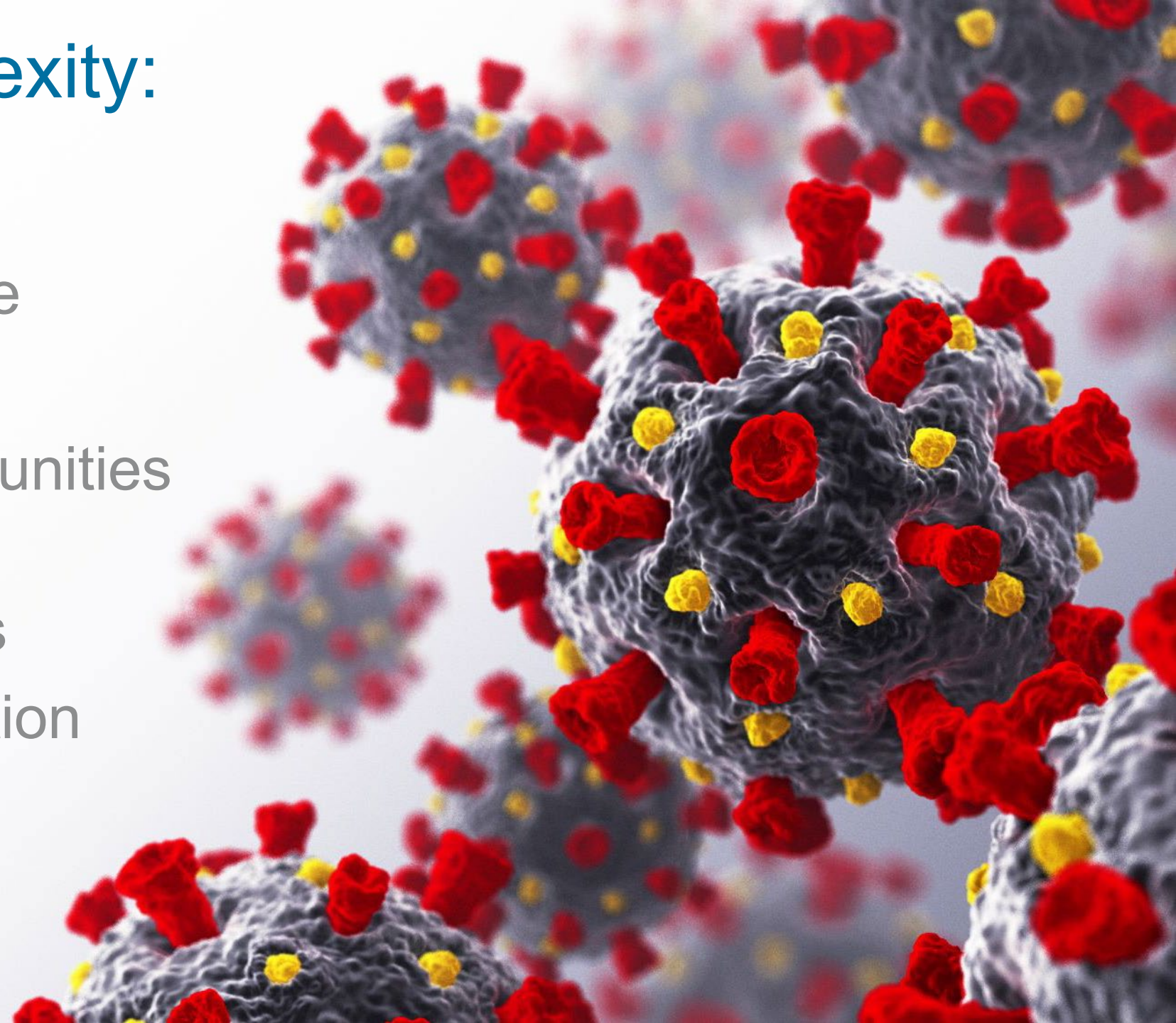


Take a short poll



Layers of complexity: COVID

- More rapid change
- Increased stress
- Decreased opportunities
- Constant learning environment shifts
- Consistent disruption
- Missing data





Calcasieu Parish School Board, LA

Needs:

- Help schools track state discipline compliance mandates.
- Identify areas of instructional needs on both large and small scale.

5TH LARGEST DISTRICT IN LOUISIANA

4,900+ EMPLOYEES
2,600+ TEACHERS
33,000+ STUDENTS

CALCASIEU PARISH
1,094
SQUARE MILES

\$390+ MILLION BUDGET

54.4% LOCAL 35% STATE 10.6% FEDERAL

34 CONSECUTIVE YEARS OF EXCELLENCE IN FINANCIAL REPORTING
\$45+ MILLION IN FEDERAL GRANTS

35 ELEMENTARY SCHOOLS **11** MIDDLE SCHOOLS **11** HIGH SCHOOLS

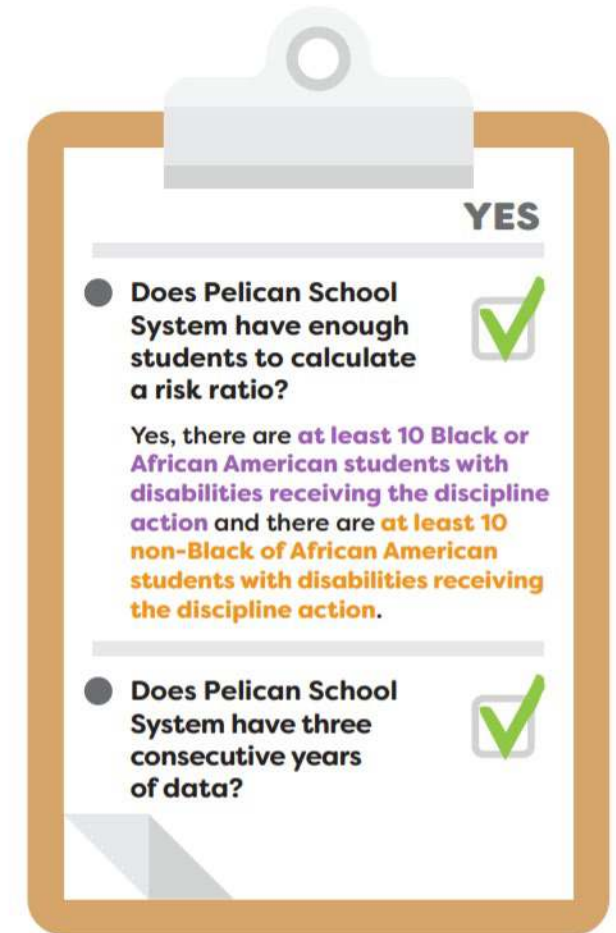
2 CAREER & TECHNICAL FACILITIES
1 ACADEMY OF LEARNING
4 ALTERNATIVE FACILITIES
2 K-12 SCHOOLS

300+ BUS ROUTES DRIVEN DAILY **4.1 MILLION+ MEALS SERVED ANNUALLY**

Louisiana discipline compliance regulations

Collects/examines data to determine whether significant disproportionality exists in the discipline of students with disabilities, by race/ethnicity.

- Does the district have enough students to calculate a risk ratio?
- Does the district have 3 consecutive years of data?



Louisiana discipline compliance

Risk ratio threshold = 3.0

1. Calculate the risk ratio.

$$\frac{50}{100} = .5$$

$$\frac{100}{1,000} = .1$$

2. Compare results.



$$\frac{.5}{.1} = \textcircled{5}$$



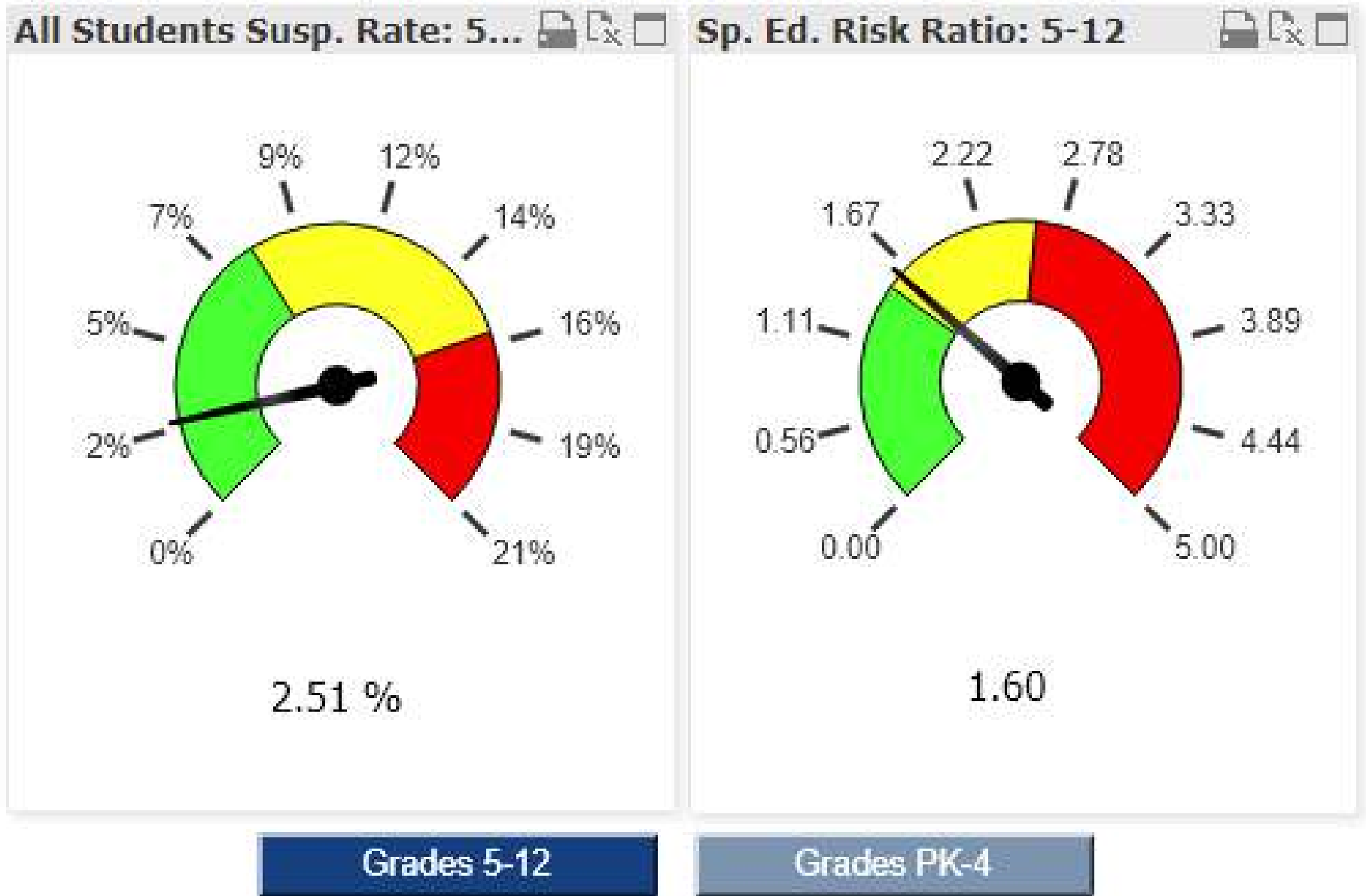
$$5.0 \geq 3.0 = \textit{significantly disproportionate}$$

If the risk ratio calculation meets or exceeds the threshold for three consecutive years, the school system is significantly disproportionate.

Louisiana discipline compliance

How
Scantron
helps...

Out-of-School Suspensions



Translating data into action: Calcasieu's instructional needs

Analyze the data.

Pinpoint the issue(s).

Plan interventions.

- Individual students

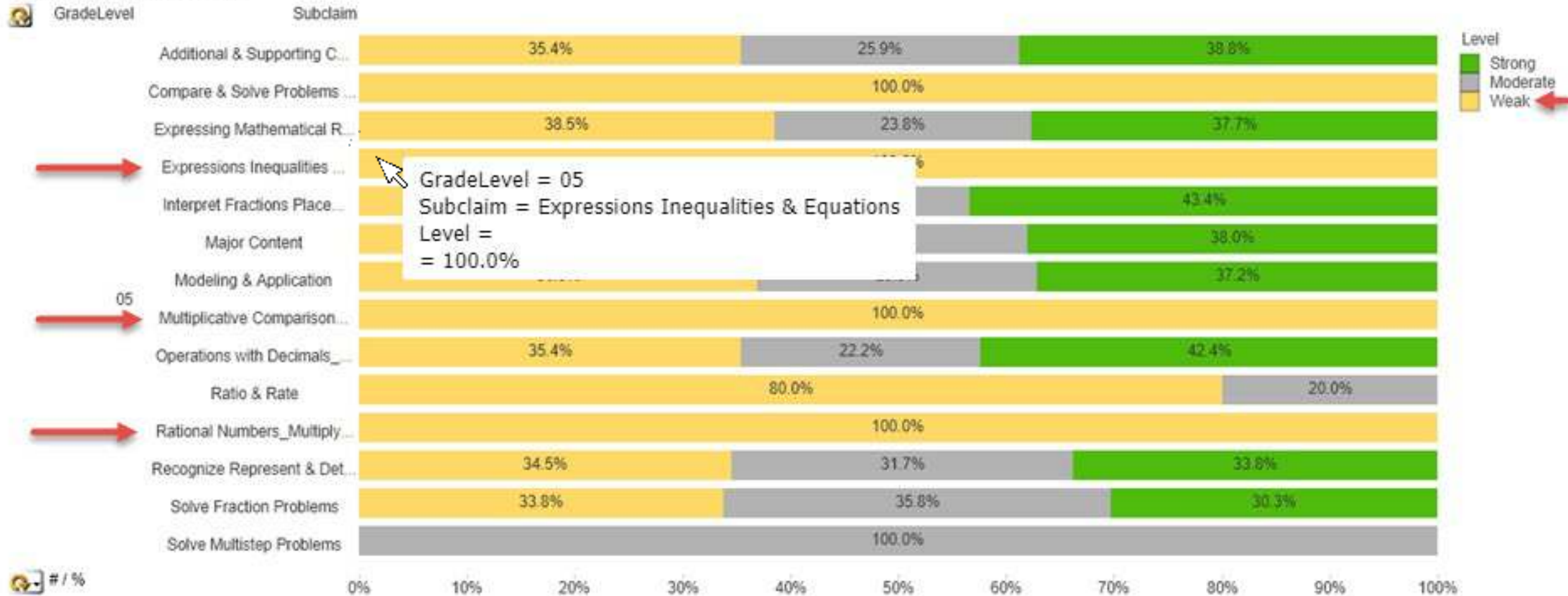
Plan instructional changes.

- Whole group if needed



Louisiana state test subclaims: Math grade 5

Claims Performance Levels



Louisiana state test subclaims: Math grade 5

Year	Student ID	Name	Grade	Date			
18-19	8675309	Student	5	4/19/2019	Math	Additional & Supporting Content	Weak
						Expressing Mathematical Reasoning	Moderate
						Interpret Fractions Place Value & Scaling	Strong
						Major Content	Moderate
						Modeling & Application	Moderate
						Operations with Decimals Read Write C...	Weak
						Recognize Represent & Determine Volu...	Strong
						Solve Fraction Problems	Weak



Teachers know each student's area(s) of need and can provide interventions more quickly.

Baldwin County Public Schools, AL

- One of only three Scholastic Lighthouse Districts in the U.S.
- 1:1 Technology
- Fastest-growing school system in Alabama
- International Baccalaureate Program
- Advanced Placement in all high schools
- Award-winning Special Needs and Gifted Students
- Dual Enrollment – take college classes in high school
- Sea, Sand and Stars Experiential Sea Lab/Planetarium

www.bcbe.org

- 31,000 students
- 46 schools
- 1 virtual school K-12 program
- 1 alternative school
- 1 aviation program
- 8 high school campuses
- 2 award winning technical campuses

Baldwin County PS, AL: Students “on the bubble”

Determine which students’ scores on a particular assessment are slightly above or slightly below benchmark

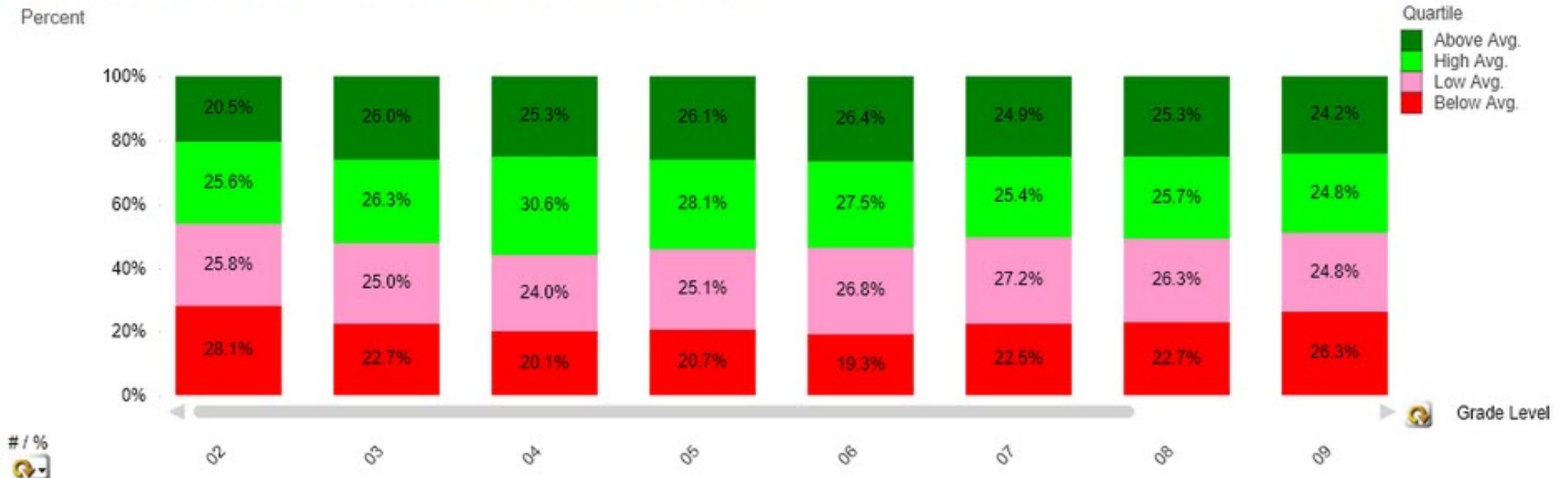


Baldwin County PS, AL: Students “on the bubble”

Performance Series - Scores

Average Subject Score
Student Test Count
Quartile Frequency Distribution - Select a subject to focus the search = Reading
AL Proficiency Frequency - Select a subject to focus the search = Reading
Gap Achievement
Average Unit Score
Unit Details

Quartile Frequency Distribution - Select a subject to focus the search = Reading



Baldwin County PS, AL: Students “on the bubble”

Performance Series - Scores

Average Subject Score | Student Test Count | **Quartile Frequency Distribution - Select a subject to focus the search = Reading** | AL Proficiency Frequency - Select a subject to focus the search = Reading | Gap Achievement | Average Unit Score | Unit Details

Quartile Frequency Distribution - Select a subject to focus the search = Reading



Baldwin County PS, AL: Gap Analysis

- Determine how Special Populations (as defined by the State DoE) performed on an assessment compared to the general population
- Disaggregate Special Populations by all students tested, a specific grade level, a specific course, a school, a classroom
- Maintain compliance with ESSA in identifying subgroup performance



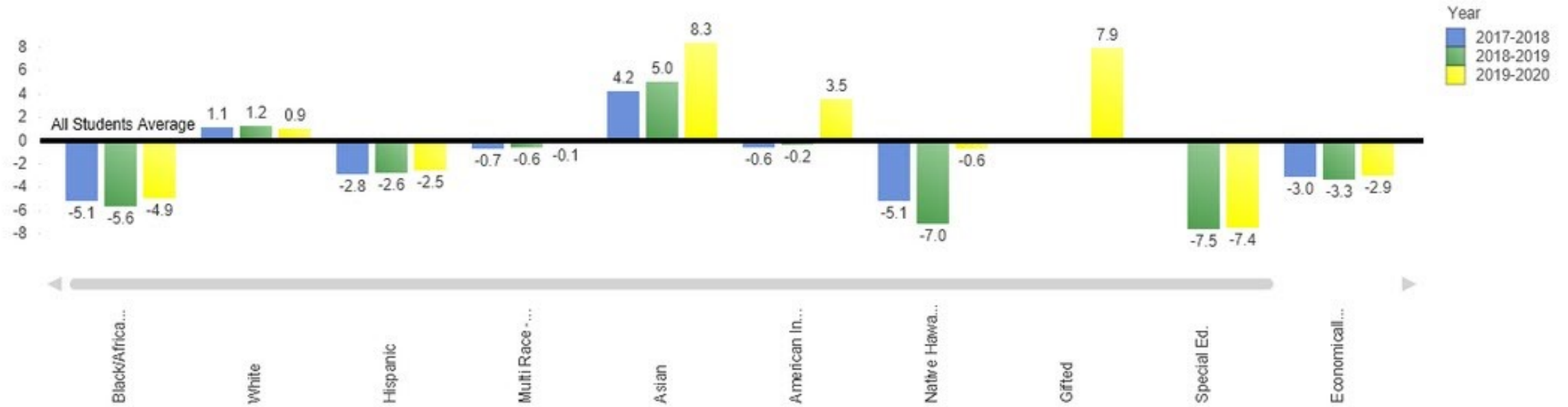
Baldwin County PS, AL: Gap Analysis

ACT

Averages
Number of Students Tested
Frequency
Gap Achievement
ACT College Readiness
Alabama Proficiency Levels
National Norms Frequency
ACT Subtest Details
Standards Domain
Growth Category

Gap Achievement

Gap Score



Baldwin County PS, AL: Gap Analysis

Actions:

- Gaps identified
- Interventions given to the appropriate populations

Interventions:

- Targeted individual instruction
- Teaching thinking strategies
- Teaching more vocabulary and comprehension skills
- Additional practice
- Focus on math vocabulary and symbols

Edgewood Independent School District, TX

Edgewood Independent School District is located on the West side of San Antonio, Texas. Today, over 20 schools and programs with over 9,000 students call Edgewood home. Even though the present Edgewood ISD became “independent” in January 1950, its formation can be traced back to 1905.



www.eisd.net

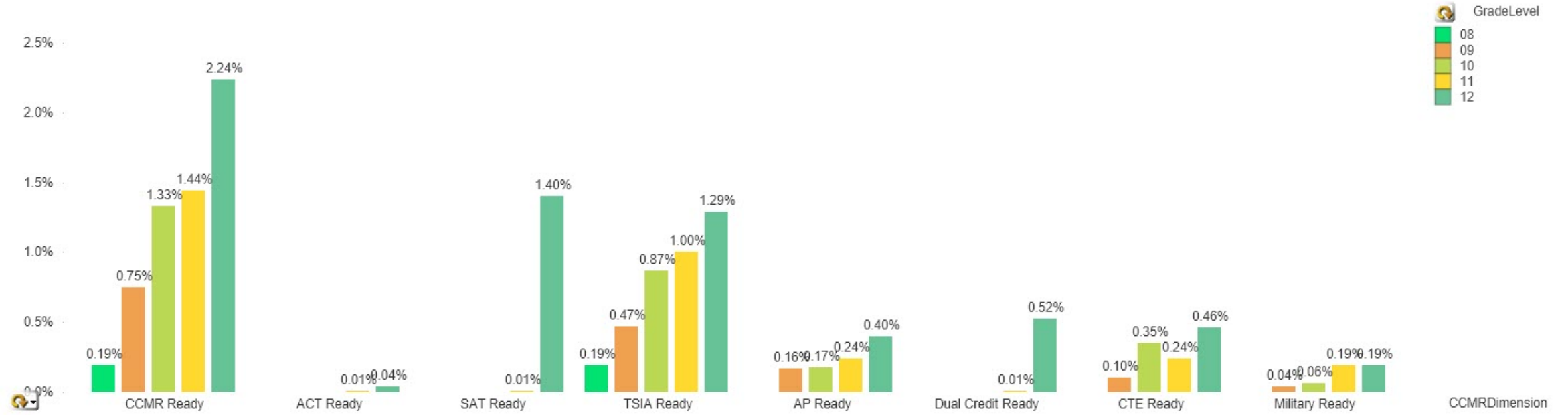
College, Career and Military Readiness (CCMR)

- ACT
- SAT
- Texas State Initiative Assessment (TSIA)
- Career and Technical Education (CTE)
- Dual Credit
- Military enlistment



Edgewood ISD: CCR Ready Expands to CCMR

Number of Students CCMR Ready



A hand is shown placing a puzzle piece into a larger puzzle. The background is a digital data visualization with a grid of blue dots and a bar chart with a white arrow pointing up. The text 'Scantron Analytics: The right data at the right time' is overlaid on the right side of the image.

Scantron
Analytics:
The right
data at the
right time

**Thank you for
attending our
webinar.**

