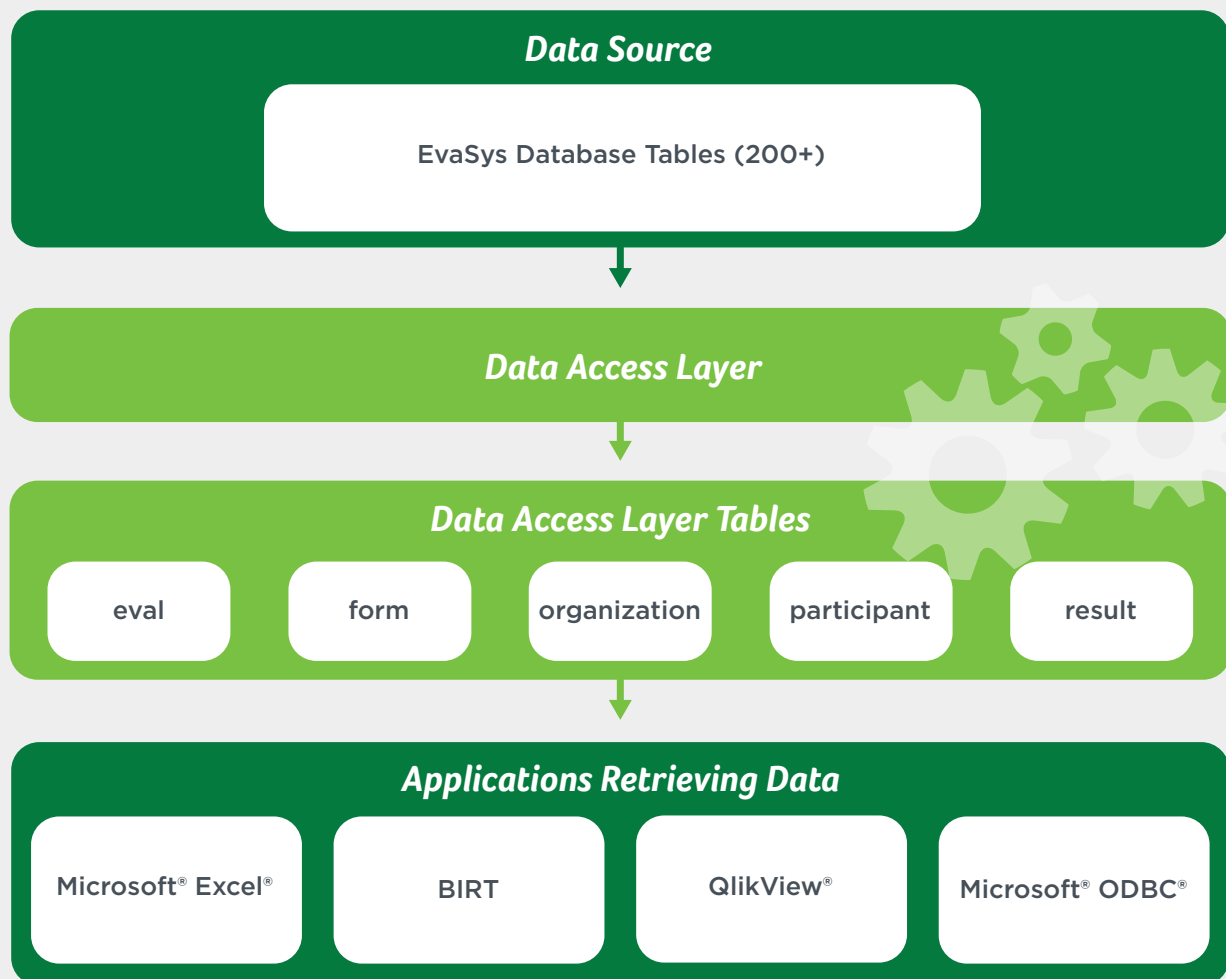




EvaSys Data Access Layer (DAL)

Direct data access made easy with Scantron Professional Services

The EvaSys Data Access Layer (DAL) allows direct access to EvaSys data, without being bogged down in details about the internal system. Under the hood, EvaSys uses over 200 database tables to model your organization's evaluation processes.



How DAL Works

The EvaSys DAL represents your data in 5 simplified tables called codebooks:

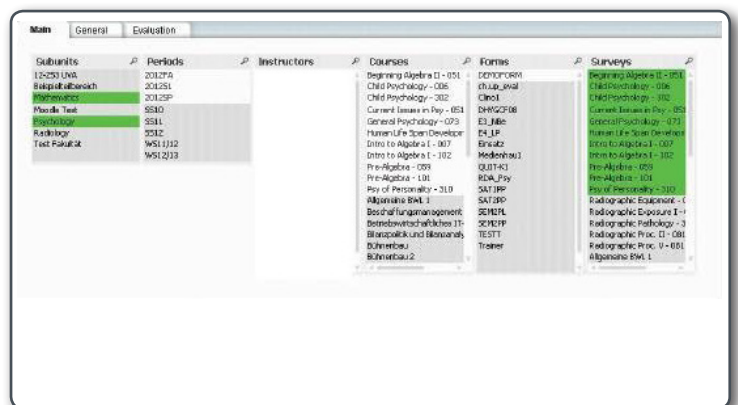
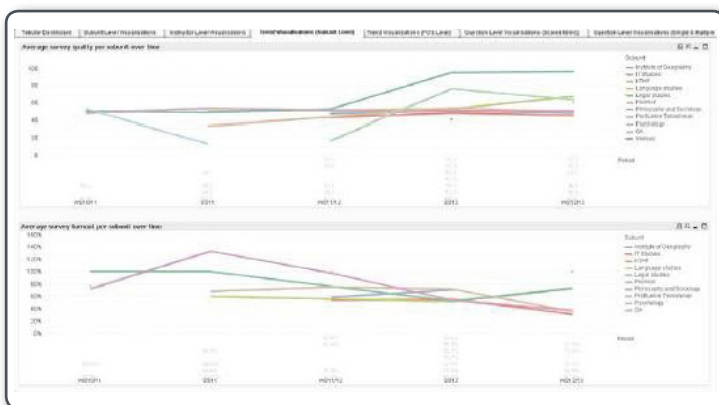
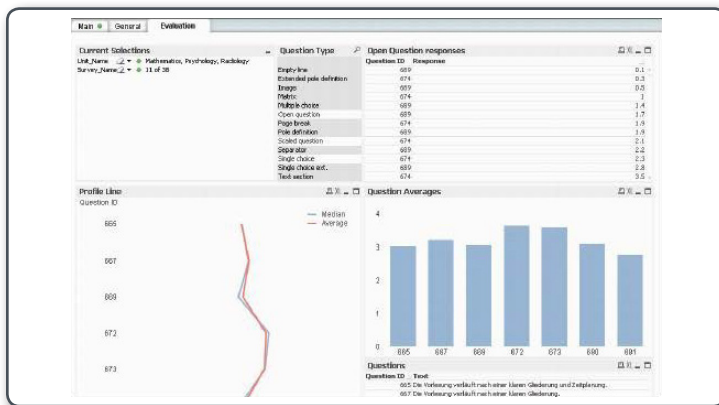
- **Evaluation Codebook:** Contains evaluation related data, such as calculated averages, quartiles etc.
- **Form Codebook:** Contains form elements, i.e. the actual question items
- **Organization Codebook:** Contains structure data, i.e. sub units, instructors etc.
- **Participant Codebook:** Contains participant data of non-anonymous surveys
- **Result Codebook:** Contains survey result raw data



What are the benefits to using the EvaSys DAL?

- Allows you to read EvaSys data directly from the database.
- Enables you to access EvaSys data from external reporting tools.
- Populates Excel 2007-based reporting templates with EvaSys data, allowing you to use the features in Excel to present your EvaSys data.

Sample analytics views created using the EvaSys DAL and Microsoft Excel



**INFORM INSTRUCTION
TO IMPACT STUDENT
ACHIEVEMENT TODAY!**

For a free consultation to meet your academic goals, call **800.722.6876** or visit us at **www.scantron.com** to learn more.

About Us

Scantron® provides technology to help you collect data you can use. Our solutions and services deliver the quality you expect from decades of experience. Whether you need to work on paper, online, or anywhere in between, Scantron can meet you where you are and help you get to where you want to be.

