

Test Less, Know More

Scantron solutions and services support your state

State educators know that assessment is a crucial part of today's educational climate. They also realize the need to balance reduced testing time demanded by parents with accountability requirements that are based on high quality assessments. Scantron has a range of assessment and analytics solutions that can help states achieve that balance.

Monitor

*student achievement with
Scantron Assessment
Solutions and Services*



- Interim assessment throughout the year
- Fixed-form and adaptive testing:
 - » Standards-based
 - » Single assessment → multiple scores
 - » Integrate with your SIS
- Assessment development services and consulting

Analyze

*results with
Scantron Analytics*



- No data warehouse needed
- Dashboards provide easy snapshots
- Explore your data by simply clicking
- Quick disaggregation for deeper analysis

Predict

*performance with
Scantron Analytics and
Psychometric Services*



Includes:

- Early Warning System
- Customizable indicators and risk thresholds
- Easily view changing profiles
- Predictive validity and other psychometric studies and services

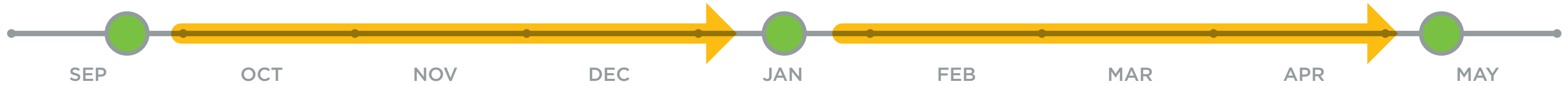
***“When the state of Alabama signed a contract with Scantron,
we got a partner in the educational process.”***

*– Dr. Tony Thacker, Coordinator, Research & Development
Alabama Department of Education*

Monitor Student Achievement



Measure **Student Growth** with scheduled **Interim Assessments**



Services Available Year-round

PROGRAM MANAGEMENT SERVICES • DIGITAL RESOURCES • VIRTUAL AND ON-SITE PROFESSIONAL DEVELOPMENT • ASSESSMENT CONSULTING

Interim assessments—get more value from one measure:

- Universal screening
- Program placement
- Standards tracking
- Summative test predictions
- Norm group comparisons

Classroom tools—connect assessment and instruction:

- Long and short forms for flexible test administration
- Create items and tests
- Use available item banks
- Support instructional planning with connected resources

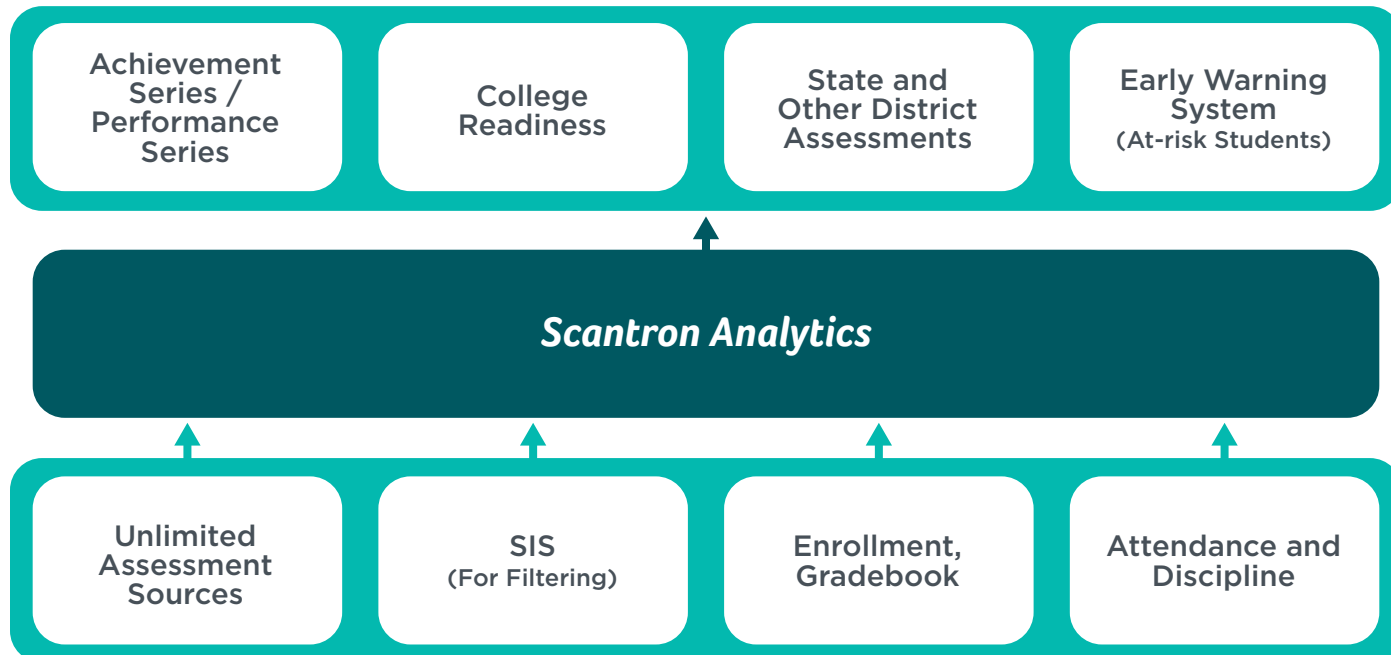
Analyze Results



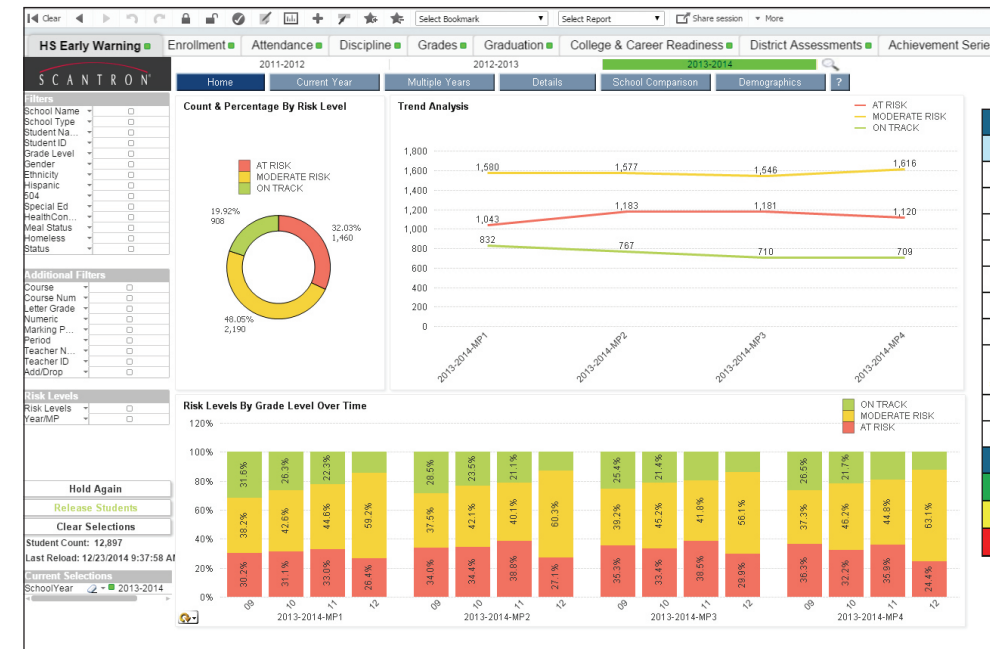
Predict Performance



Dashboards



Data Sources



Risk Indicator Thresholds		Close X
Indicator	Threshold	
Marking period absence rate	10%	
Annual absence rate	10%	
Course Failures (per marking period)	1	
Course Failures(Annual)	3	
Core Course Failures (marking period)	1	
Core Course Failures (Annual)	3	
GPA	2.00	
# of credits earned (annual)	5(9th Gr),10(10th Gr), 20(11th Gr),30(12th Gr)	
Discipline Incidents (per marking period)	2	
Discipline Incidents (Annual)	5	
Risk Levels		Link
On Track	0 flags	
Moderate Risk	1-3 Flags	
At Risk	4 or more flags	

Case Study: Alabama State Department of Education (DOE)



Alabama State DOE has purchased Achievement Series and Performance Series as a voluntary assessment adoption program. The solution is free to its schools.

Performance Series Usage Statistics (2012–2013 school year)

99% of 137 districts have implemented:

» Total Tests Administered: 1,495,578

» Unique Students Tested: 257,309

Achievement Series Usage Statistics (2012–2013 school year)

More than 86% of 137 districts have implemented:

» Total Tests Administered: 710,858

» Unique Students Tested: 96,719

Spotlight on Alabama: Florence City Schools

Florence City Schools has implemented Achievement Series and Performance Series to help them align with Alabama's Plan 2020. Florence City uses this connection to drive their Falcon Learning Conversation Network (FLCN), where educators get together and talk about their results. Florence City is seeing increases in every subject area and grade level.

Reading achievement in 10th grade has jumped almost **50%** since 2014.

Graduation rates have risen from 68% to **95%**.

"The biggest return on investment we have seen is the conversations in the halls. Teachers are easily and readily conversing about instruction and about the data and about achievement—these conversations are happening now. That was when I really knew we were going to be okay."

— Dr. Jimmy Shaw

Available State-level Services

Assessment Development Services

Whether you need support for the entire assessment development cycle or targeted help with a few key activities, Scantron's team of experts can help you develop assessments.

Professional Development

Scantron's experts can work with you to create sessions for key educators or assessment specialists, on the assessment development cycle.

Psychometric Support and Research

Scantron has developed a suite of psychometric and research services to help educators understand and use assessment results.

Client Program Management and Implementation Services

Scantron provides states with essential tools and informed support recommended for statewide implementation and continued growth.

Data Integration and Development Services

Scantron provides a variety of data integration and development services to help you get the most out of your statewide implementation.



**INFORM INSTRUCTION
TO IMPACT STUDENT
ACHIEVEMENT TODAY!**

For a free consultation to meet your academic goals, call **800.722.6876** or visit us at **www.scantron.com** to learn more.

About Us

Scantron® provides a comprehensive set of solutions that help improve student outcomes in K-12 education. We offer software and services to meet the needs of customers' assessment programs regardless of where they are on the technology spectrum—pure paper, pure online, or anywhere in between.